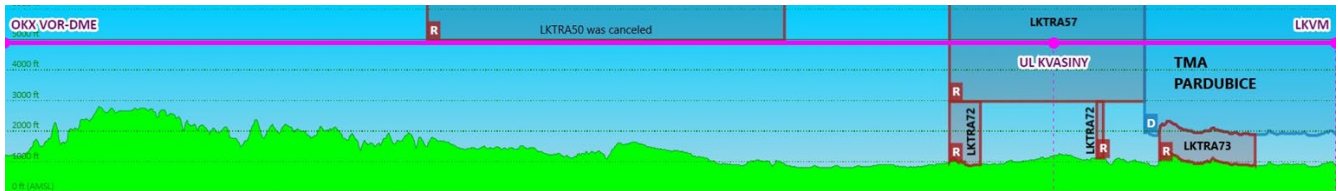
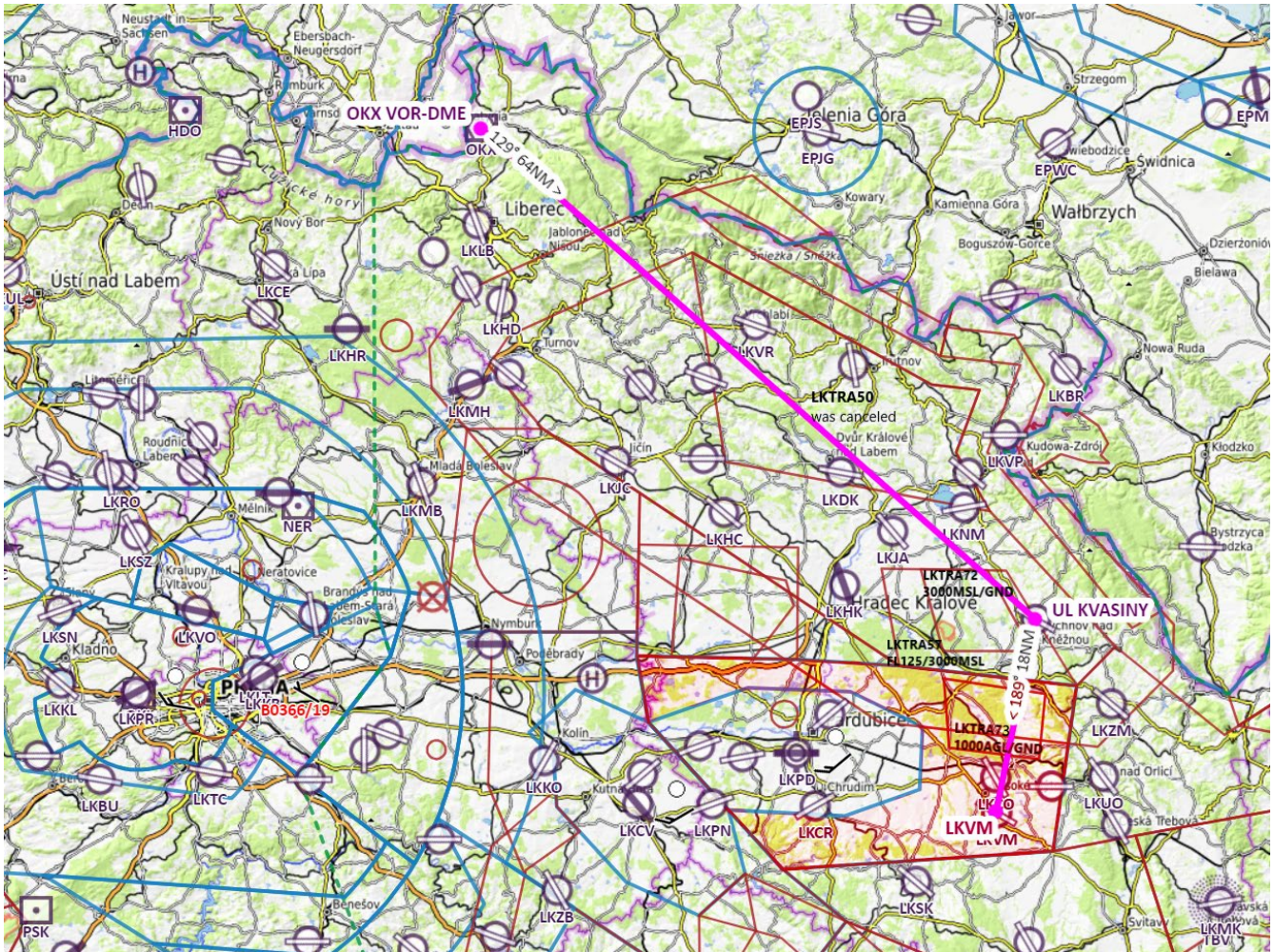


The north arrival route to LKVM



The recommended north arrival route to LKVM is begins at OKX. Proceed via radial 129 from OKX. After 64NM from OKX turn right to heading 189. 12NM in front of LKVM you are entering TMA Pardubice.

Over OKX you can call Praha INFORMATION 136,175Mhz to check activations of areas LKTRA72, LKTRA57 and LKTRA73. During the weekends they are often deactivated. If you fly higher than 2000ft on QNH of LKPD, you must call Pardubice RADAR 128,365Mhz for ATC clearance the latest 16NM in front of LKVM !!!

LKVM – Vysoké Mýto

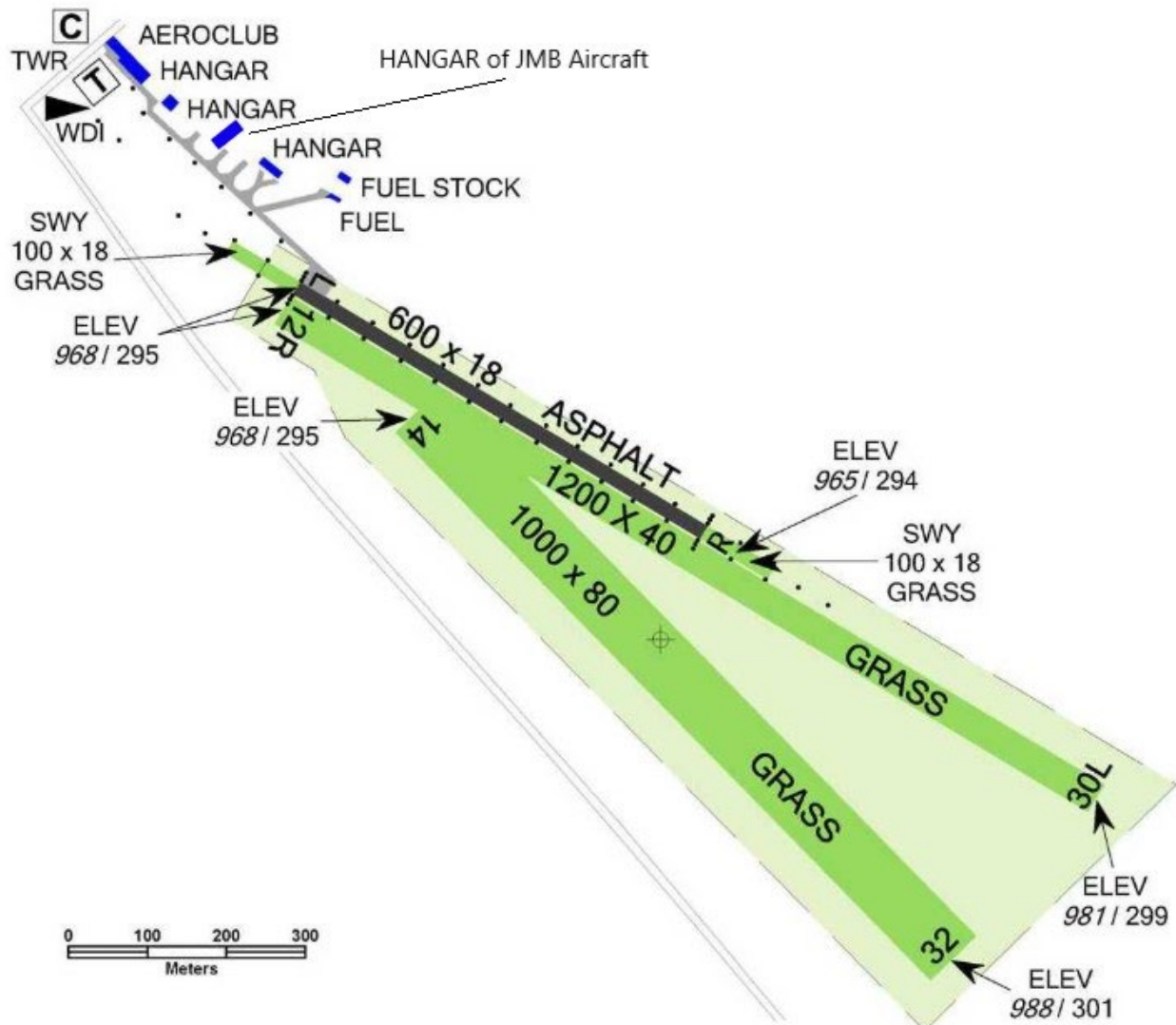
130,605 Mhz

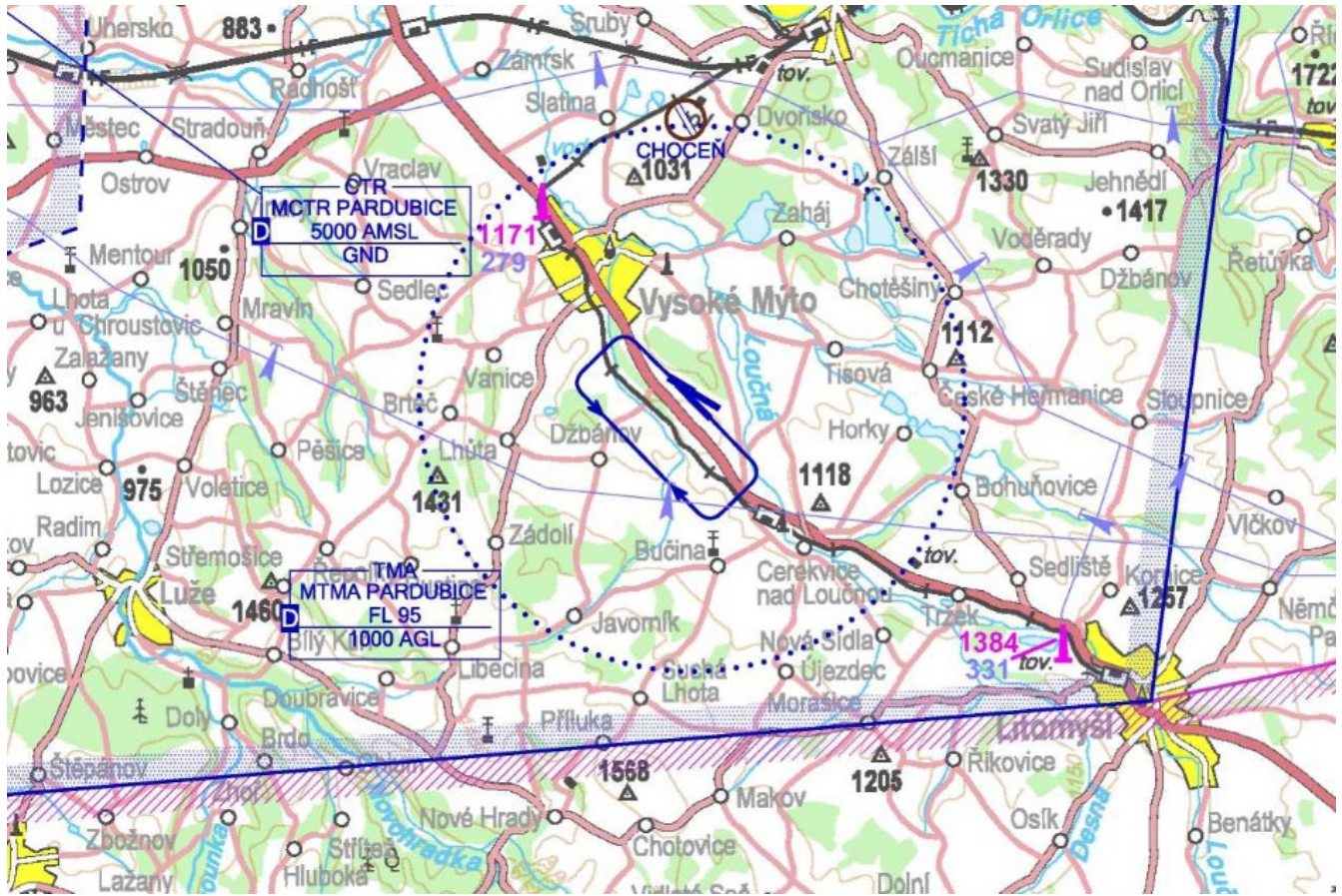
ARP: 49°55'37"N, 16°11'09"E

3 km SE Vysoké Mýto

ELEV: 988 ft / 301 m

The traffic circuit: 2000 ft / 610 m AMSL





We are looking forward to see you at LKVM and have a nice flight!