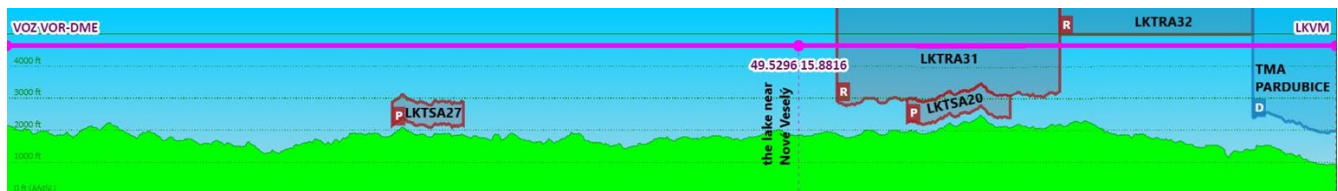
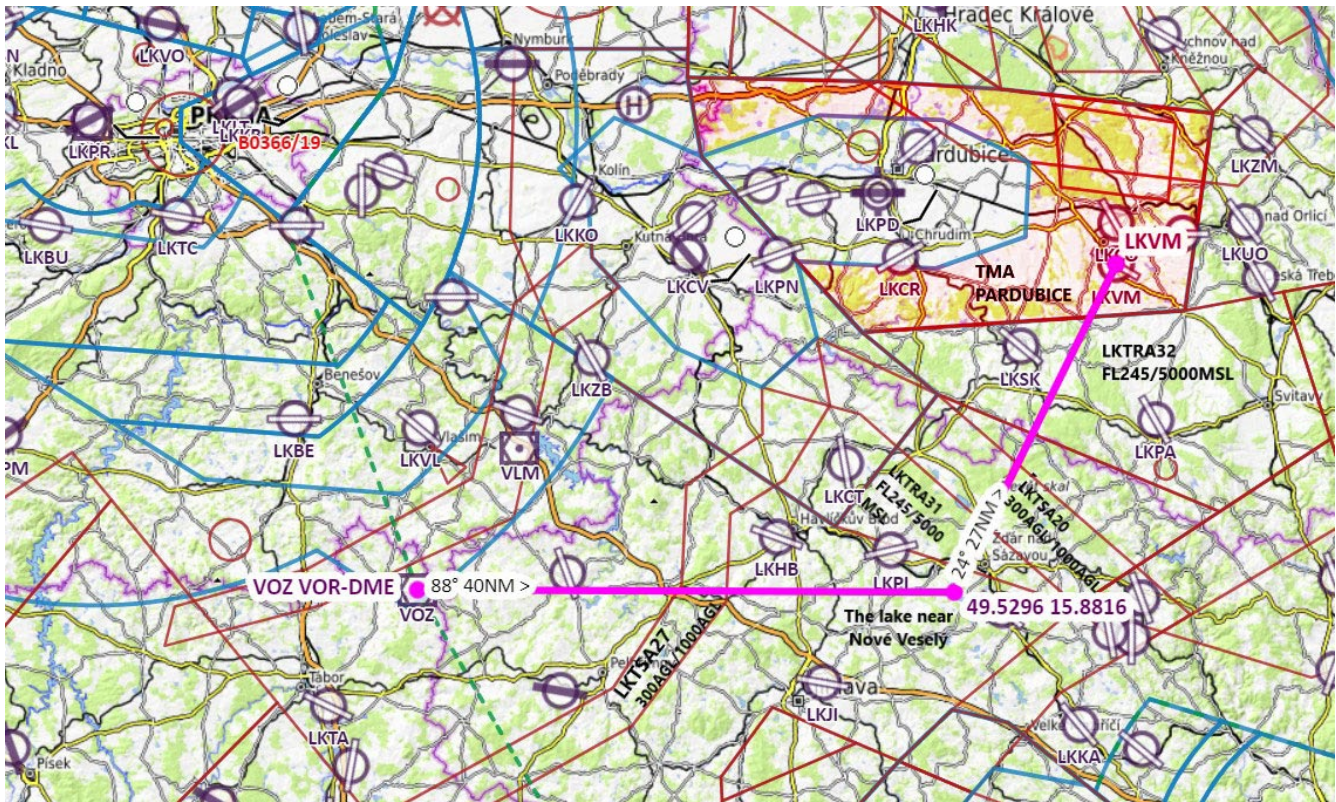


The south arrival route to LKVM



The recommended south arrival route to LKVM begins at VOZ. Proceed via radial 088 from VOZ. After 40NM from VOZ turn left to heading 024. 5NM in front of LKVM you are entering TMA Pardubice.

Over VOZ you can call Praha INFORMATION 136,175Mhz to check activations of areas LKTS27, LKTS20, LKTRA31 and LKTRA32. During the weekends they are often deactivated. If you fly higher than 2000ft on QNH of LKPD, you must call Pardubice RADAR 128,365Mhz for ATC clearance the latest 8NM in front of LKVM !!!

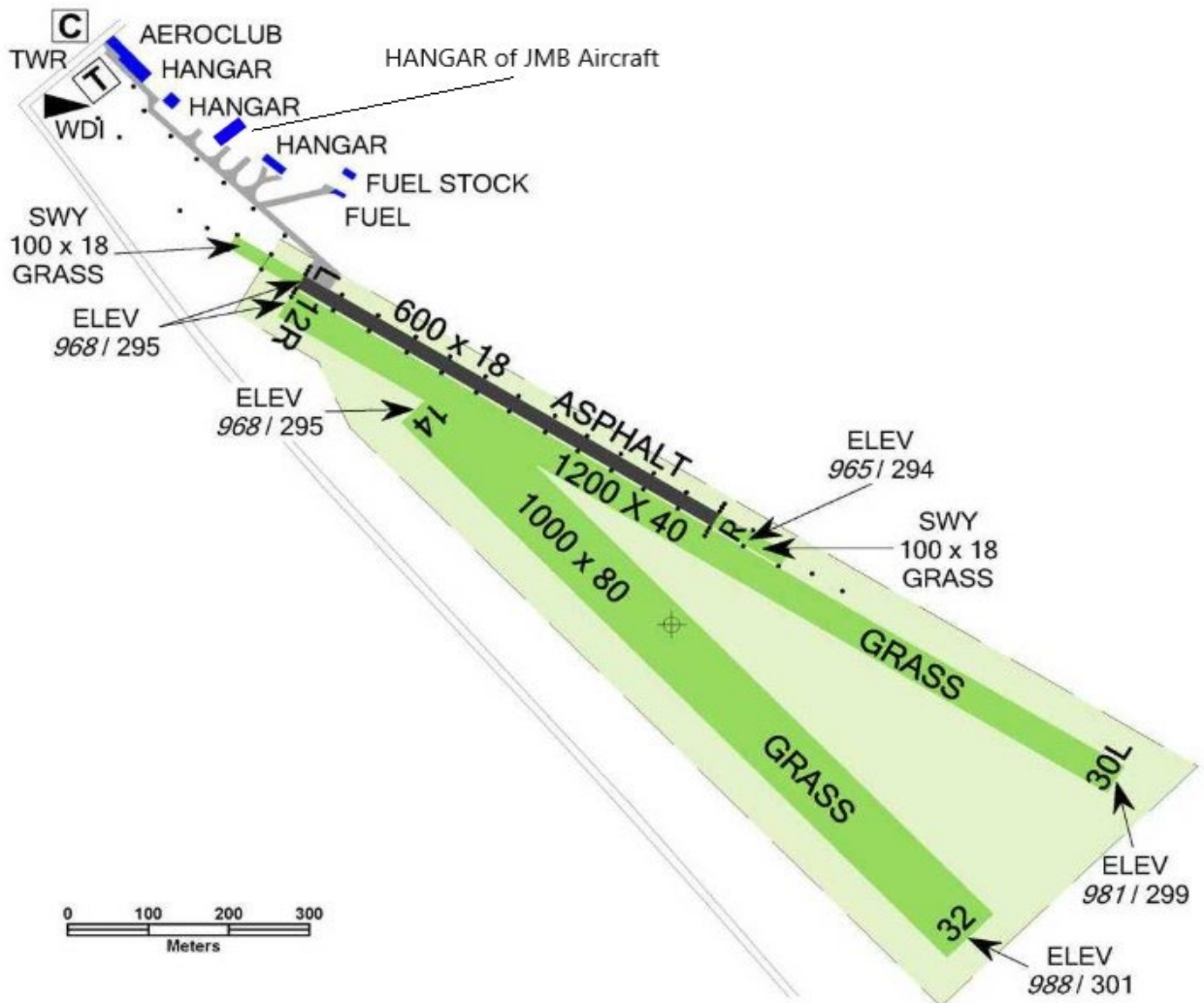
LKVM – Vysoké Mýto

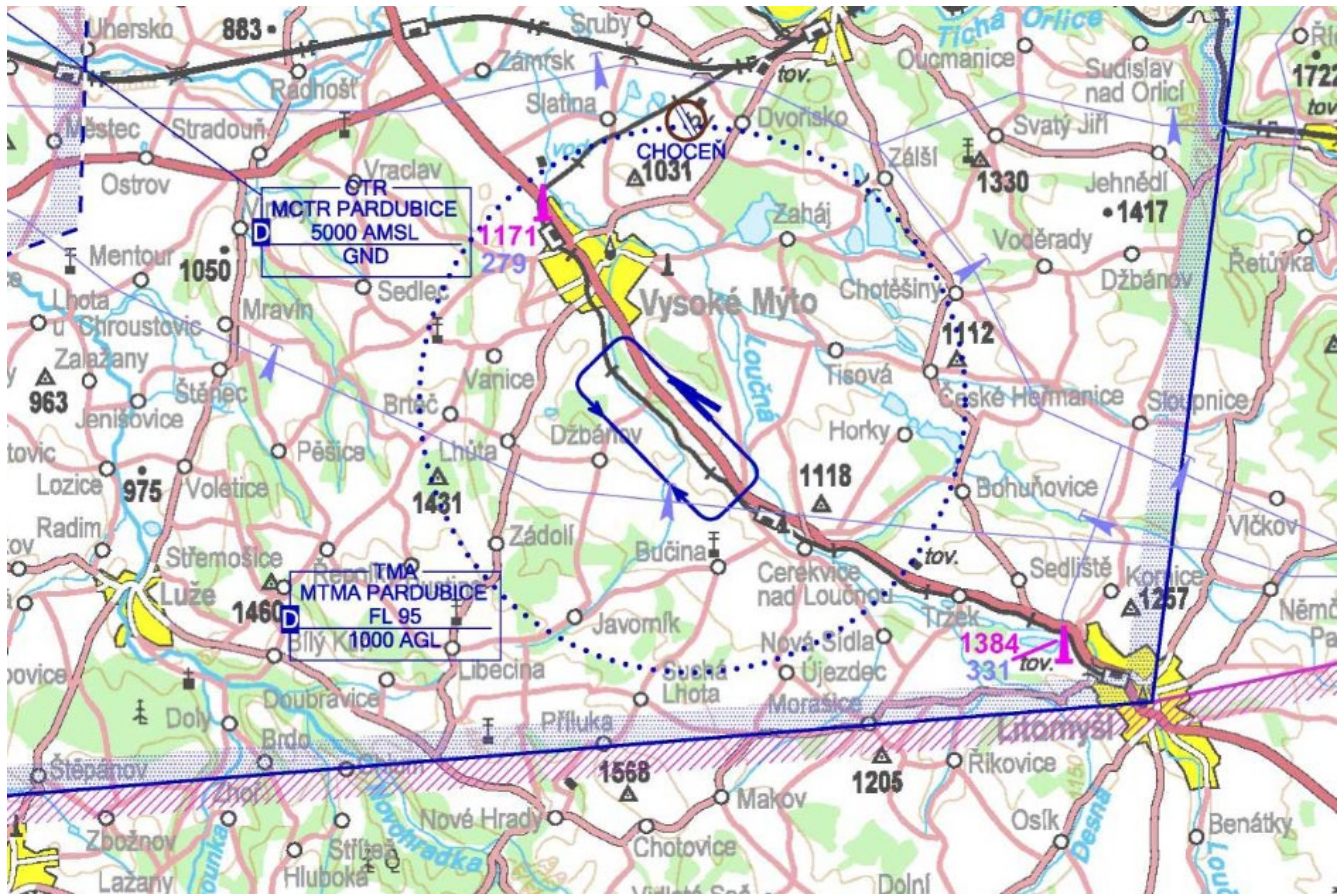
130,605 Mhz

ARP: 49°55'37"N, 16°11'09"E
3 km SE Vysoké Mýto

ELEV: 988 ft / 301 m

The traffic circuit: 2000 ft / 610 m AMSL





We are looking forward to see you at LKVM and have a nice flight!